

The One On The Left

March

Sandy Keith

Musical notation for 'The One On The Left' in G major, 4/4 time. It consists of four staves of music. The first staff begins with a treble clef, a key signature of one sharp (F#), and a 4/4 time signature. The melody is characterized by eighth-note patterns and dotted rhythms. The piece concludes with a double bar line.

Strathspey

Loudon's Bonnie Woods and Braes

Traditional

Musical notation for 'Loudon's Bonnie Woods and Braes' in G major, 2/4 time. It consists of two staves of music. The first staff starts with a treble clef, a key signature of one sharp (F#), and a 2/4 time signature. A first ending bracket labeled '2' spans the first few measures. The second staff features a first ending bracket labeled '1' and a second ending bracket labeled '2' at the end. The piece ends with a double bar line.

The Devil In The Kitchen

Reel

Traditional

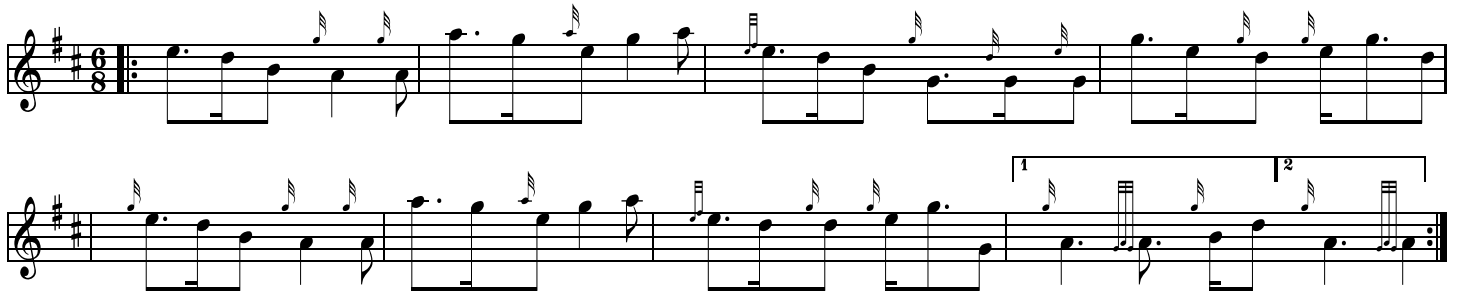
Musical notation for 'The Devil In The Kitchen' in G major, 2/4 time. It consists of three staves of music. The first staff begins with a treble clef, a key signature of one sharp (F#), and a 2/4 time signature. The melody is a continuous stream of eighth notes. The piece concludes with a double bar line.



Finlay M. MacRae

Slow March

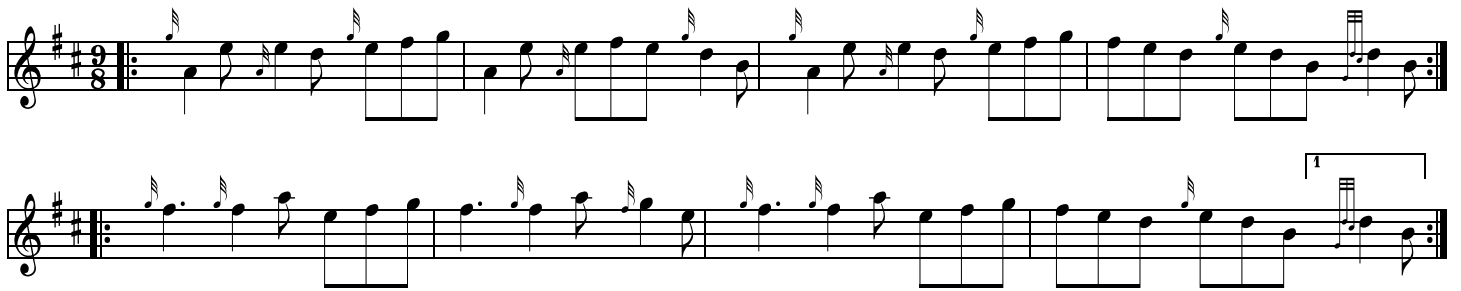
Phil. Cunningham



Paddy Be Easy

Slip Jig

Trad.



Barbara's Jig

Jig

Trad.

